



United Way of Douglas  
& Pope Counties

**\$9 PER PAY PERIOD:**  
\$234 Annually

**\$6 PER PAY PERIOD:**  
\$156 Annually

**\$4 PER PAY PERIOD:**  
\$104 Annually

**\$2 PER PAY PERIOD:**  
\$52 Annually

**NEW DONORS:**

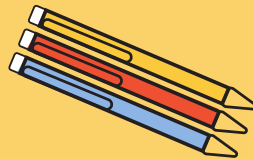
**Cost Comparison:**



MOVIE for 1



LARGE Specialty Coffee



Pack of Pens



BIG Candy Bar



**Impact over a year:**

Helps someone find a job through Equipped to Work.

Provides Stuff the Bus school supply bags for 8 students!

Feeds 5 local families at the Food Drop.

Provides 10 kids with food for the weekend through Backpack Attack.

Creates grant opportunities for local non-profits.



United Way of Douglas  
& Pope Counties

**\$9 PER PAY PERIOD:**  
\$234 Annually

**\$6 PER PAY PERIOD:**  
\$156 Annually

**\$4 PER PAY PERIOD:**  
\$104 Annually

**\$2 PER PAY PERIOD:**  
\$52 Annually

**NEW DONORS:**

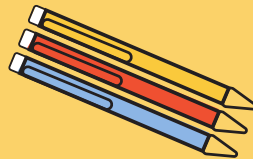
**Cost Comparison:**



MOVIE for 1



LARGE Specialty Coffee



Pack of Pens



BIG Candy Bar



**Impact over a year:**

Can help a job seeker to secure and maintain stable employment. Allowing them (and/or their family) to become financially stable through Equipped to Work.

Provides 8 local students with backpacks stuffed full of needed schools supplies through out Stuff the Bus program!

Feeds 5 local families through a monthly Food Drop.

Provides 10 Backpack Attack food bags to local elementary school students that are facing food scarcity over the weekend.

Creates grant opportunities for local non-profits.



United Way of Douglas  
& Pope Counties

**\$16** PER PAY PERIOD:  
\$416 Annually

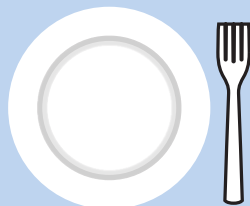
**\$8** PER PAY PERIOD:  
\$156 Annually

**\$4** PER PAY PERIOD:  
\$104 Annually

**\$2** PER PAY PERIOD:  
\$52 Annually

**NEW DONORS:**

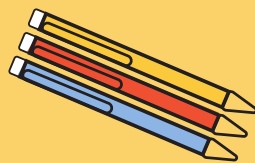
**Cost Comparison:**



A Dinner OUT!



LARGE Specialty Coffee



Pack of Pens



BIG Candy Bar



**Impact over a year:**

Helps someone find a job through Equipped to Work.

Provides Stuff the Bus school supply bags for 8 students!

Feeds 5 local families at the Food Drop.

Provides 10 kids with food for the weekend through Backpack Attack.

Creates grant opportunities for local non-profits.